

AIR OPUS[®] OP15

OFF-ROAD

www.opuscamper.com.au  

THE ULTIMATE FAMILY
HYBRID CARAVAN



RRP **\$54,990** +ORC

CreditOne
Smarter Finance and Insurance

Finance options available from: **\$180** per week
tel. 0418 905 149

Above example based on 84 months and \$1,000 deposit at an interest rate of 4.99% p.a. These payments are intended as a guide only. Different amounts, terms and your credit profile may result in different comparison rates and payments. Costs such as redraw fees or early repayment fees and cost savings such as fee waivers, are not included in this example but may influence the cost of the loan. An exact quote must be obtained at the time of application. Please contact Credit One for further terms and conditions and your financial adviser for an further information. This information is correct as of 02/02/2021. Comparison rate 5.69% p.a based on a \$30,000 loan amount on an 84-month term.

AIR OPUS[®] OFF-ROAD OP15

Specifications

Colour	Metallic Grey
Length	6750mm
Height	2685mm (Roof closed)
Width	2200mm
Tare	2250kg
Ball Weight	250kg
ATM	2800kg
Chassis Construction	6" Hot dip galvanised chassis Aluminium Frame Aluminium composite body with checkerplate One piece walls, floor & roof

1. King Bed
2. Ensuite
3. Lounge Area
4. Cupboard & Bench
5. Tall Cupboard
6. Bunks
7. Fridge Slide
8. Slide-Out Kitchen
9. Pantry
10. Fold-Out Table



FLOOR PLAN SHOWN: *OPTION ONE*

Features

Internal

Bed Set Up	King North-South bed with under bed storage
Mattress	Innerspring mattress
LED Lighting	LED strip lighting, LED reading lamps, LED clearance and tail lamps, LED awning light, LED grab handle
Tap Set Up	Hot & Cold mixer tap at kitchen
Ensuite	Thetford shower/toilet with cassette toilet and 1 piece moulded shower floor
Sound System	CD/DVD/MP3/USB/SD/BT Stereo with 2 int/ext speakers
Air Conditioner	Truma Aventa air conditioner
Cabinetry	Soft touch cabinetry
Induction Cooktop	Internal cooking (optional)

External

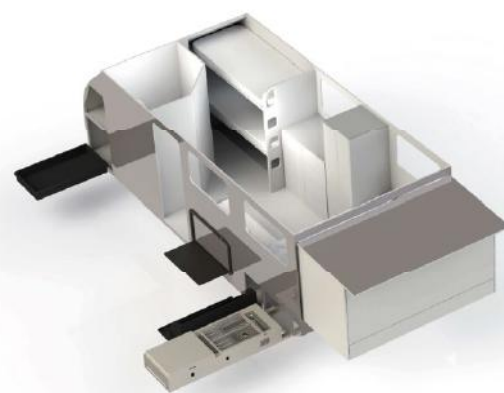
Suspension	Heavy duty IRONMAN shock absorbers as standard
Jockey Wheel	ARK XO750 Jockey Wheel
Coupling	DO35 3.5T articulated hitch
Brake System	12" electric brakes & adjustable handbrake
Wheels/Tyres	2 x 16 inch alloy wheels with 265/75R16 mud terrain tyres & 2 x spare tyres
Gas Bottle Holder	2 x 4kg gas bottle holders
Fresh Water Tanks	2 x 120L, with stone guard
Grey Water Tank	1 x 67L grey water tank with stone guard
Stabiliser Legs	4 x wind down stabiliser legs
Slide Out Kitchen	External stainless steel kitchen with 4 burner AGA approved stove
Storage	External slide-out pantry, External sliding fridge tray
Step	Pull-out aluminium step
Awning	Wind out awning
Jack	Kojack hydraulic jack
Skylights	Ranger RV skylights
Table	Fold-out table

Plumbing

Gas & Hot Water	Truma electric hot water system
Water Pumps	1 x Surflo pump
Water Tank Guard	1.5mm checker plate

Electrical

Power Supply	200 watt solar with 12V regulator
Lithium Battery	2 x 100Ah deep cycle AGM with 240V charger
Towing Wiring	7 PIN flat plug & Anderson plug
Switchboard	12V distribution panel with water & battery meters
TV	12V television with TV antenna
Power Outlets	12V outlets internal and external
Roof Vents	1 x pop up bathroom vents



WHERE TO BUY

Full dealer listing for Australia and New Zealand can be found here:

www.opuscamper.com.au/dealers-network

Or, contact us directly:

OPUS Camper
HQ 22 Mills Road
Braeside
VIC 3195
03 9588 2959

For a full lists of available options please visit:

enquiries@opuscamper.com.au
www.opuscamper.com.au

