

← OPUS®

OFF-GRID SHOWER TENT

New Roof Rack Install



WELCOME!

Congratulations on the purchase of your OPUS Off-Grid Shower Tent.

INSTALLING

The OPUS Off-Grid Shower Tent is supplied with everything you need to mount it to your OP4. The following steps will run you through the initial installation of the shower tent.

Step 1: Mask left side of roof rack for drilling (fig. 1)

Step 2: Next measure 2000mm from ground for the top hole measurement (fig. 2)

Step 3: Measure 15mm from outside edge of frame and mark for centre of hole to drill (fig. 3)

Step 4: Use pivot bracket to mark the second hole (fig. 4)

Step 5: Then drill both holes with a 8mm drill bit (fig. 5)

Step 6: Loosely fit the pivot bracket (fig. 6)

Step 7: Next unwrap shower tent and place two 20mm M8 bolts on the bottom track of the shower tent with a flat washer (fig. 7)

Step 8: Attach shower tent to pivot bracket using the bolts from step 7 and two m8 nuts to secure shower tent to bracket (fig. 8)

Step 9: then place tie down clasp 150mm from end with two 15mm M8 bolts and tighten (fig. 9)

Step 10: Finally add an eye bolt to the T Channel to attach the tie down clasp to while in the travel position (fig. 10)



Fig. 1



Fig. 2

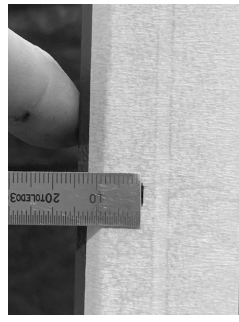


Fig. 3

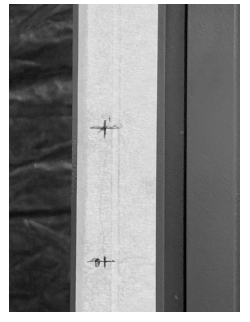


Fig. 4



Fig. 5



Fig. 6

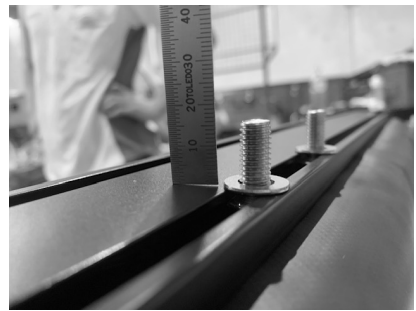


Fig. 7



Fig. 8



Fig. 9



Fig. 10

Care & Saftey

CLEANING

- Clean with lukewarm water and soft brush or sponge. Do not use hard soaps and or chemical detergents.
- Do not use or expose to petrol chemicals.
- Allow to fully dry before storing.

STORAGE

Conditions may require you store your OPUS Off-Grid Shower Tent wet. It is vital that at the earliest opportunity the shower tent is unpacked and allowed to fully dry before repacking. This will help eliminate potential mould or the breakdown of the fabric structure due to unnecessary wear.

WARRANTY

The OPUS Off-Grid Shower Tent is covered by a 2-year warranty. To register your warranty please visit:
purpleline.com.au/product-registration-form/

EXCLUSIONS

The above warranty is limited to manufacturing and material defects. Not included are damage caused by misuse or abuse, wear and tear, condensation, extreme weather, accidents, incorrect set up, damage caused by mould, insects, animals or children. This also excludes broken poles and damage caused by a jammed, snagged zipper or excessive force applied to zipper causing failure.

CONSUMER RIGHTS

Purple Line goods come with guarantees that cannot be excluded under Australian law. You are entitled to a replacement or refund for a major failure and for compensation for any other reasonably foreseeable loss or damage. You are also entitled to have goods repaired or replaced if the goods fail to be of acceptable quality and failure does not amount to a major failure.

MAKING A CLAIM

To make a claim in relation to the above manufacturer warranty, please ensure that you have retained your proof of purchase then email us at enquiries@purpleline.com.au stating the nature of your claim and we will be in touch with you as quickly as possible.